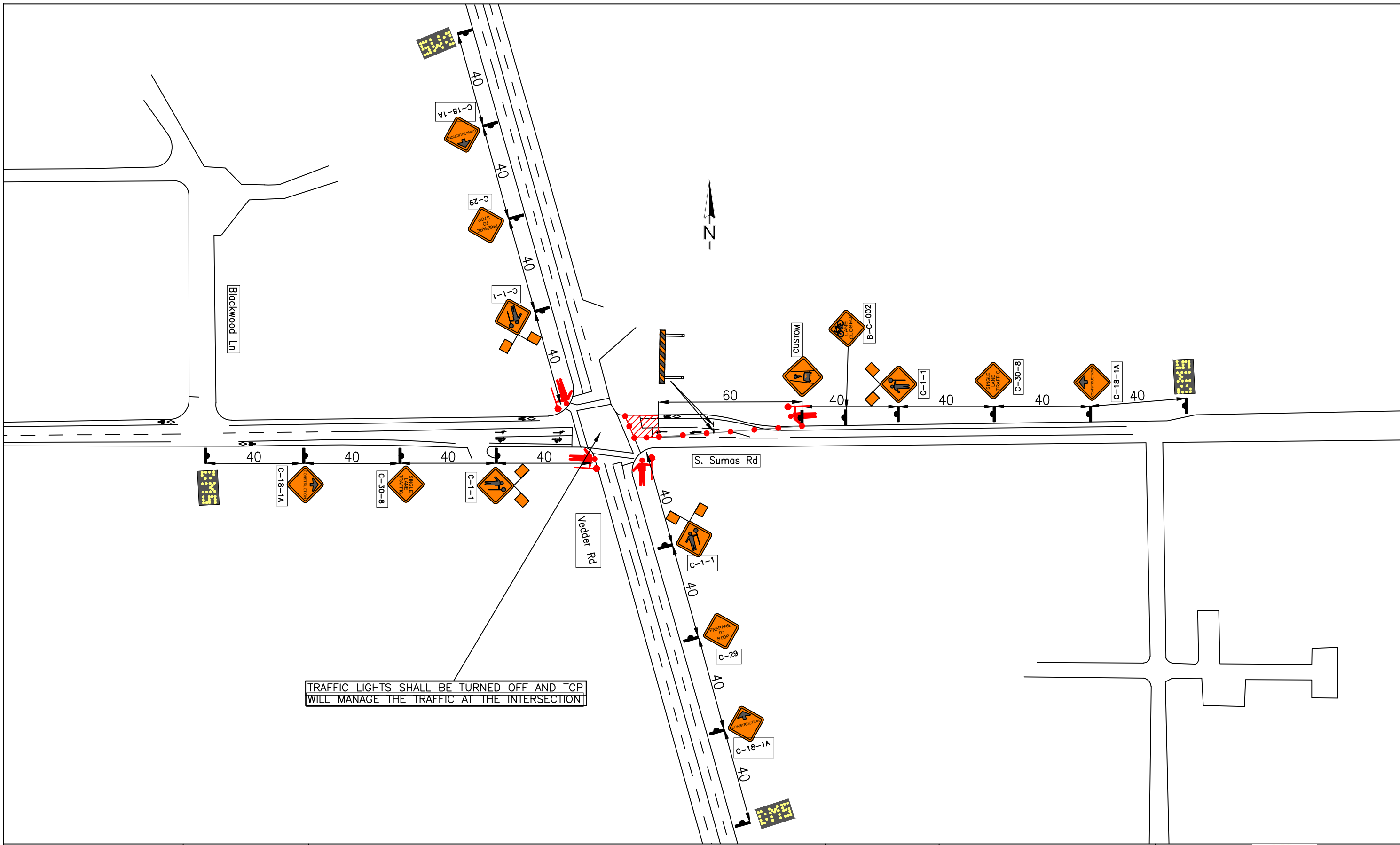


 www.torrenttraffic.com	Legend: <ul style="list-style-type: none"> Tubular marker spacing = 15m Baricade Traffic sign location Work area Barricade 90 x 30 Spacing = 15m 	Notes: 1 - Traffic sign locations shall be field adjusted to accommodate field conditions. 2 - TCPs to assist pedestrians and cyclists as necessary. 3 - A minimum of 5 tubular markers or barrels shall be used for TCP tapers. 4 - Access to private driveways to be maintained at all times. 5 - Existing traffic conditions (all lanes open) to be restored at the end of each shift. 6 - Proposed Obstruction times: Mon to Thu 8:00am - 2:00pm 7 - Traffic layout and distance based on Traffic Management Manual for Work on Roadways - 2015 edition	Revisions: Rev. 1 - Apr 26, 2019 - Bike lane closure & pedestrian crossing closures signs Rev. 2 - Apr 30, 2019 - Changed hours of operation Rev. 3 - May 2, 2019 - Added 4 Message Boards/Changed hours	 May 6, 2019	Drawing Description: Traffic Diversion on Vedder Rd and S. Sumas Rd for Surveying	 City of Chilliwack 2019 Utilities Upgrade Chilliwack, BC
	Scale: NTS Date: Apr 22/2019 By: TONY	Project No.:	Drawing No.: 127-01			



TRAFFIC LIGHTS SHALL BE TURNED OFF AND TCP WILL MANAGE THE TRAFFIC AT THE INTERSECTION



www.torrenttraffic.com

- Legend:
- Tubular marker spacing = 15m
 - Barricade
 - Traffic sign location
 - Work area
 - Barrel 90 x 30 Spacing = 15m

Notes:

- 1 - Traffic sign locations shall be field adjusted to accommodate field conditions.
- 2 - TCPs to assist pedestrians and cyclists as necessary.
- 3 - A minimum of 5 tubular markers or barrels shall be used for TCP tapers.
- 4 - Access to private driveways to be maintained at all times.
- 5 - Existing traffic conditions (all lanes open) to be restored at the end of each shift.
- 6 - Proposed Obstruction times: Mon to Thu 3:00pm - 11:00pm
- 6 - Traffic layout and distances based on Traffic Management Manual for Work on Roadways - 2015 edition

Revisions:

No.	Description

Seal:

Drawing Description:

E/B SLAT on S. Sumas Rd for sanitary manhole connections

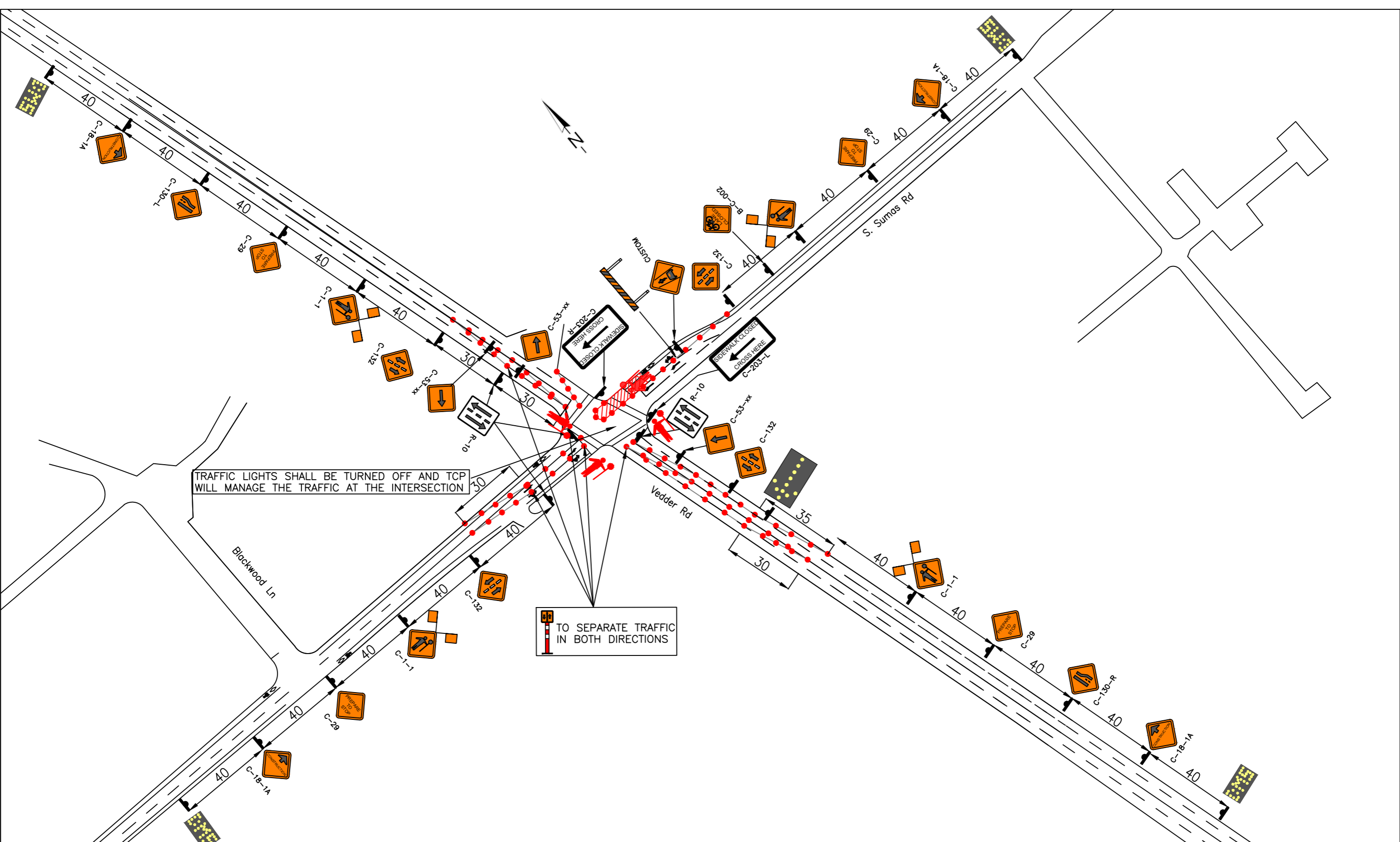
Scale: NTS Date: Jun 8/2019 By: TONY



City of Chilliwack 2019 Utilities Upgrade
Chilliwack, BC

Project No.:

Drawing No.: 127-03



TRAFFIC LIGHTS SHALL BE TURNED OFF AND TCP WILL MANAGE THE TRAFFIC AT THE INTERSECTION

TO SEPARATE TRAFFIC IN BOTH DIRECTIONS